

## TWELFTH NIGHT

by Thea Sneddon and Lorraine Toomey as written in the school magazine NOBBYS 1956

This year Third Year gave five performances of "Twelfth Night" (or "What You Will") by William Shakespeare, thus carrying on the tradition established when the present school building was first opened, carrying the torch of drama into this our Jubilee Year,

Miss McKenna again gave her untiring attention to the direction and production of the play, with the usual delightful results. Praise is due to the members of staff, Mrs Bruce, Miss Morris, Miss Nancarrow, Miss Preston and Miss Scobie for the make-up, to Mrs Toms and Mrs Lees for supervising the costumes and to Miss McGilchrist and the Third Years Art girls for the backdrops, which added that extra touch of realism so necessary to stage productions.

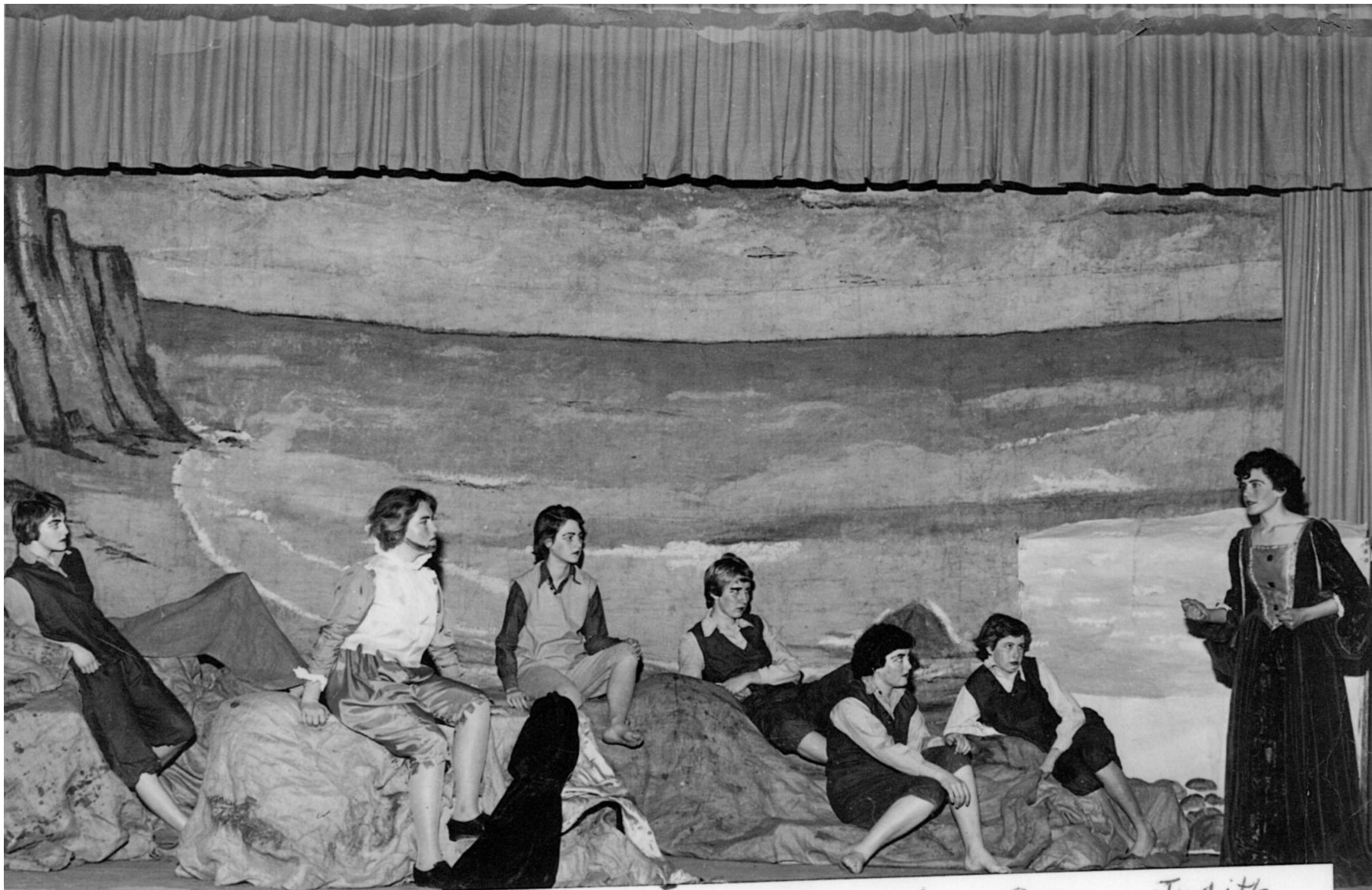
The skilful portrayal of all the characters, when combined added up to a marvellous performance which reached the high standard set by previous Third Years. Sir Toby, Sir Andrew, Maria and Fabian made a robust comedy quartet, especially in the near-midnight scene. Feste, the clown, played by Kay Turner, was sketched very schrewdly and well, as it was a difficult part, and her singing especially delighted. Olivia, acted by Katherine Wallace, looked beautiful and played her part with dignity. Truly royal was the Duke, played by Lyn Aitkin, both in his bearing and his mood of melancholy caused by unrequited love. The twins, Viola and Sebastian, Judith Penman and Heather McKinnon, were touching in their mutual loss at the beginning of the play, and their resemblance was so amazing that many in the audience did not realise until they saw the two girls together in the last act that different girls were playing the roles.

Joan Woodward is to be congratulated on her pomposity, which provoked riots of laughter from the audience. The two sea captains, Maureen Castles and Roslyn Craig, were very convincing in their loyalty. The priest, Geraldine Taylor, was extremely well cast and her solemn looks provided a great contrast to Sir Toby and his retinue in their gleeful antics.

The sweet singing of the attendants and courtiers added an extra touch of enchantment to the production, which was further enhanced by the background music. The lovely costumes and realistic scenery and back-drops added to the atmosphere, while the scene-shifting was done with smoothness and efficiency.

In conclusion, we should like to say we found the play most enjoyable, and look forward to next year's with anticipatory delight.





Beverley  
Cattanch

Maureen  
Castles

Julie  
Lieberman

Dianne  
Wyatt

Janice  
Nixon

Sue  
Campbell

Judith  
Penman